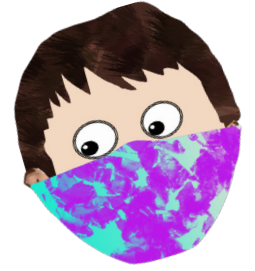




THIS JOURNAL BELONGS TO:



A series of horizontal lines for writing, consisting of 18 lines on the right page.



A series of horizontal lines for writing, consisting of 18 lines on the left page.

Blank lined area on the left side of the page.

Blank lined area on the right side of the page.



A series of 15 horizontal black lines, evenly spaced, intended for writing on the left page of the worksheet.



A series of 4 horizontal black lines, evenly spaced, intended for writing on the left page of the worksheet.

A series of 15 horizontal black lines, evenly spaced, intended for writing on the right page of the worksheet.

